

Progress OpenEdge BPM

Workshop

Stefan Bolte
Principal Systems Engineer
October 9, 2013

Welcome to the OpenEdge BPM Workshop

Your Hosts

- Sasha Kraljevic, Simon Epps and Stefan Bolte

This Workshop

- You will implement a simple process
- The work is segmented in 3 Lessons
- We synchronize after each Lesson

Today's Goals

- Enjoy working with Progress Developer Studio for OpenEdge BPM
- Get the full picture of the whole process from design to control
- Take it from there and map it to your own use cases

Workshop Flow, Begin at 9 am / Finish at Noon

9:00 am	Introduction and Workshop Setup
9:30 am	Lesson A – Design Your Process
11:00 am	Lesson B – Execute Your Process
11:45 am	Wrap Up and Feedback

Workshop Flow, Begin at 9 am / Finish at Noon

1:00 pm	Introduction and Workshop Setup
1:30 pm	Lesson A – Design Your Process
3:00 pm	Lesson B – Execute Your Process
3:45 pm	Wrap Up and Feedback

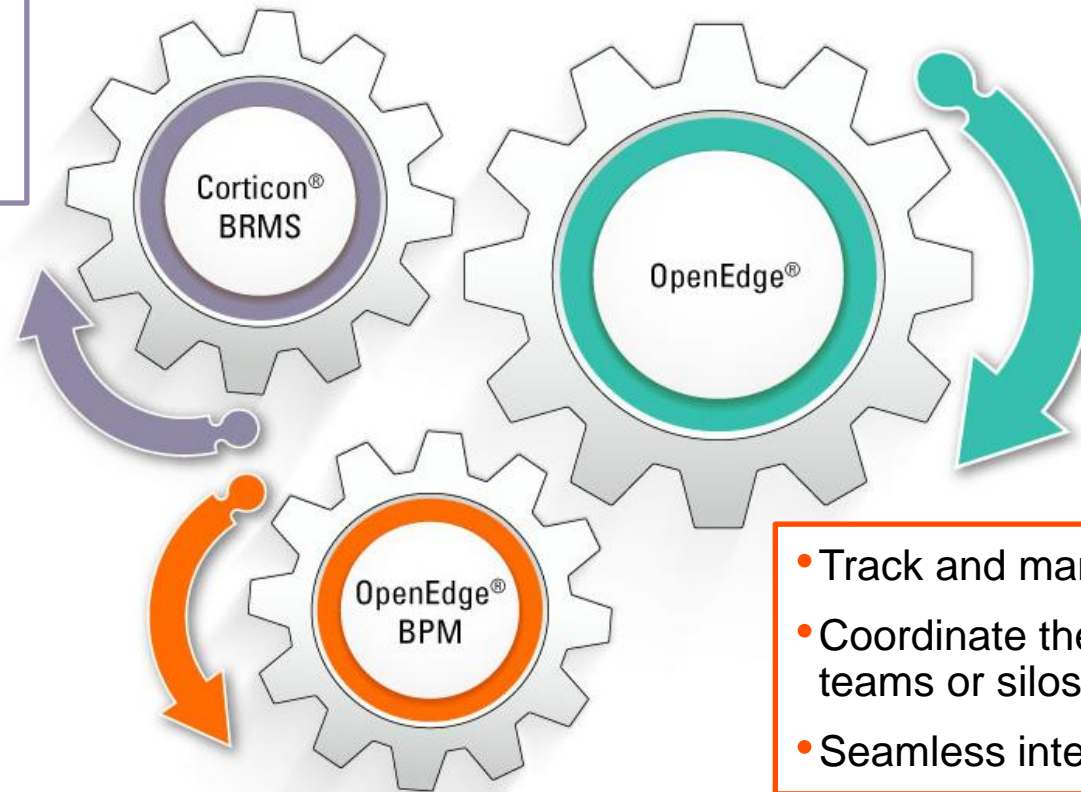
Applications Designed for Change

Accelerate Productivity with OpenEdge BPM



Progress OpenEdge 11.3 Equals Productivity Drive Faster, Business-Driven Change

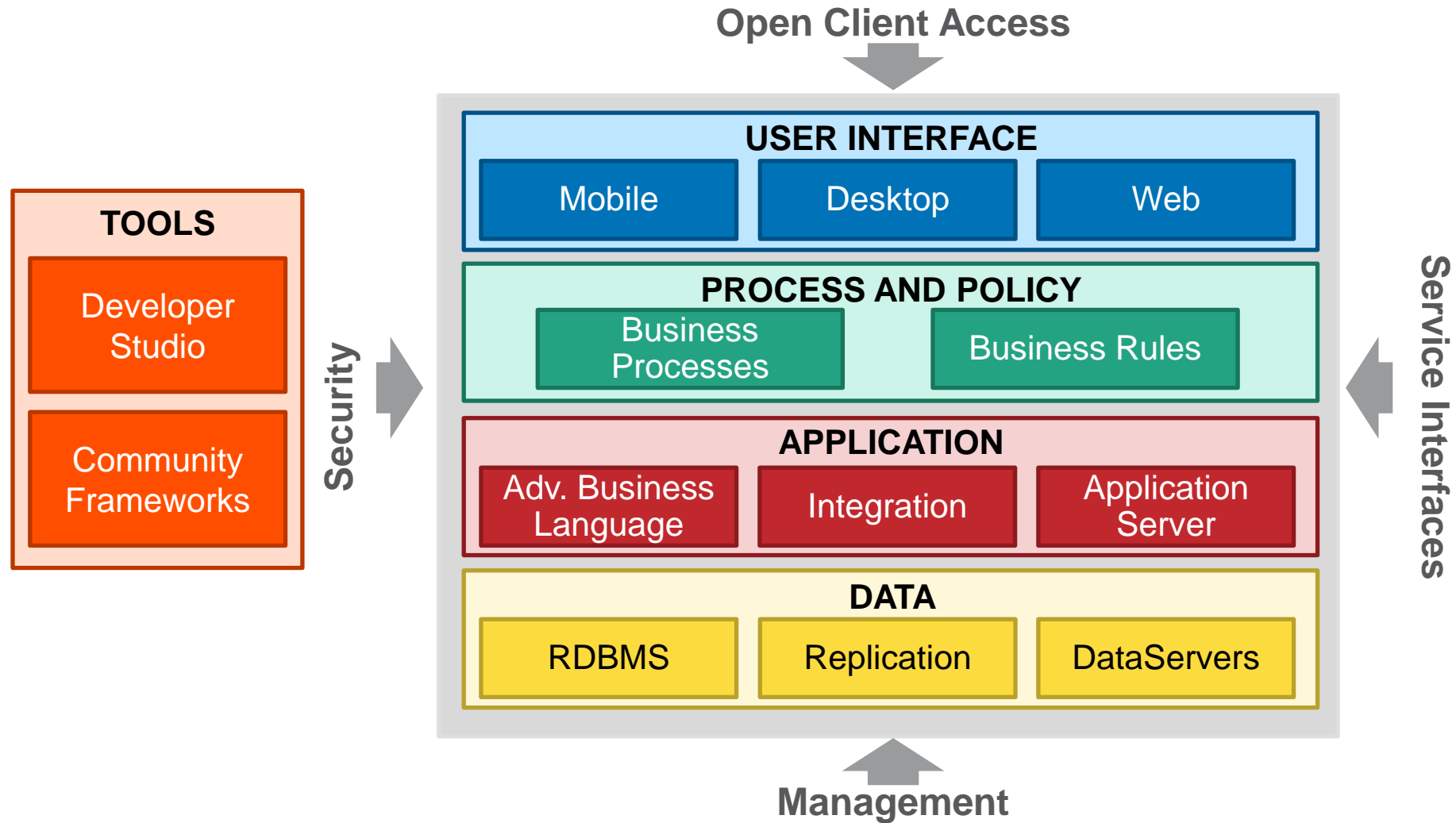
- Simplify the decision making process
- Define rule sets quickly and easily from existing OpenEdge schema
- Seamlessly pass application data to the rules engine and get results back



- Repurpose existing logic; No rip-and-replace!
- All integrated together under the leading application development platform for business users

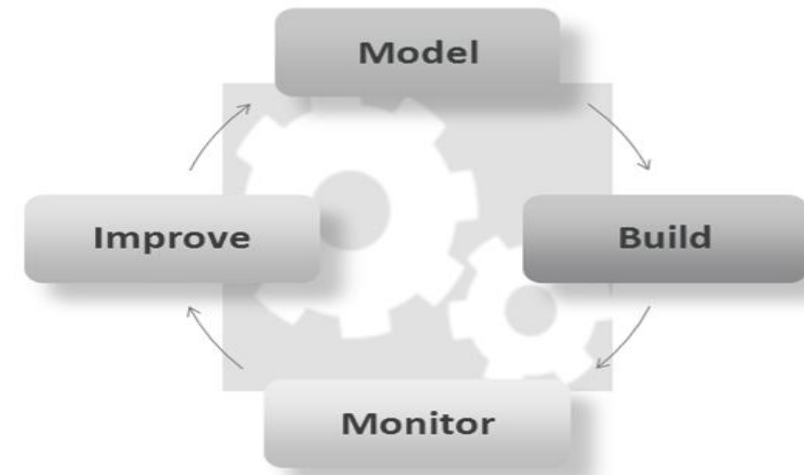
- Track and manage performance
- Coordinate the sequence of work across teams or silos
- Seamless integration of process and data

The Progress OpenEdge 11 Platform



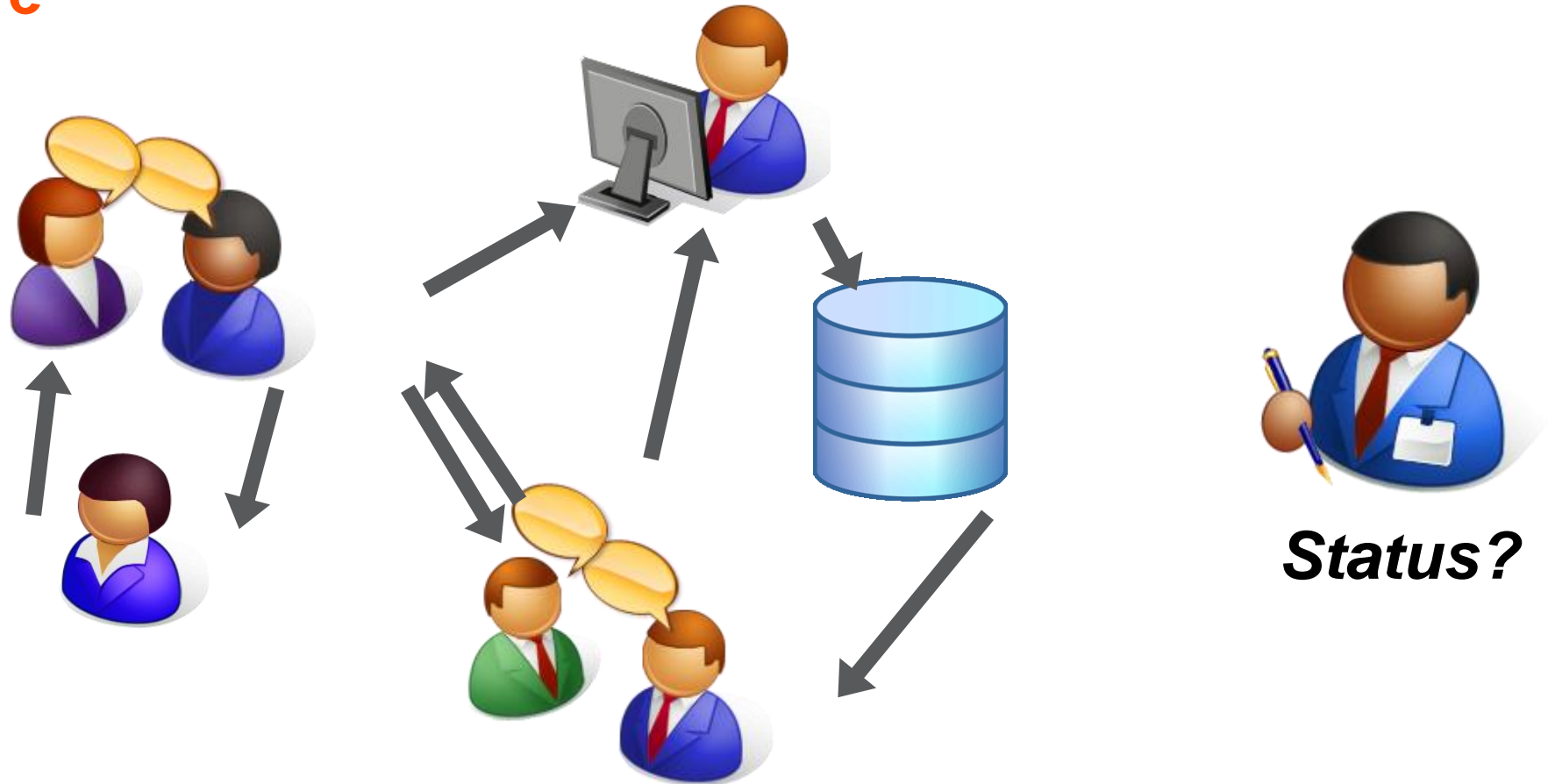
What Is Business Process Management

- **Process Analysis and Documentation**
- **Workflow Automation**
- **Process Status and History Visibility**
- **Model-driven Development**
- **Application Integration**



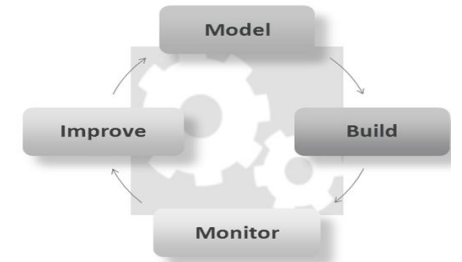
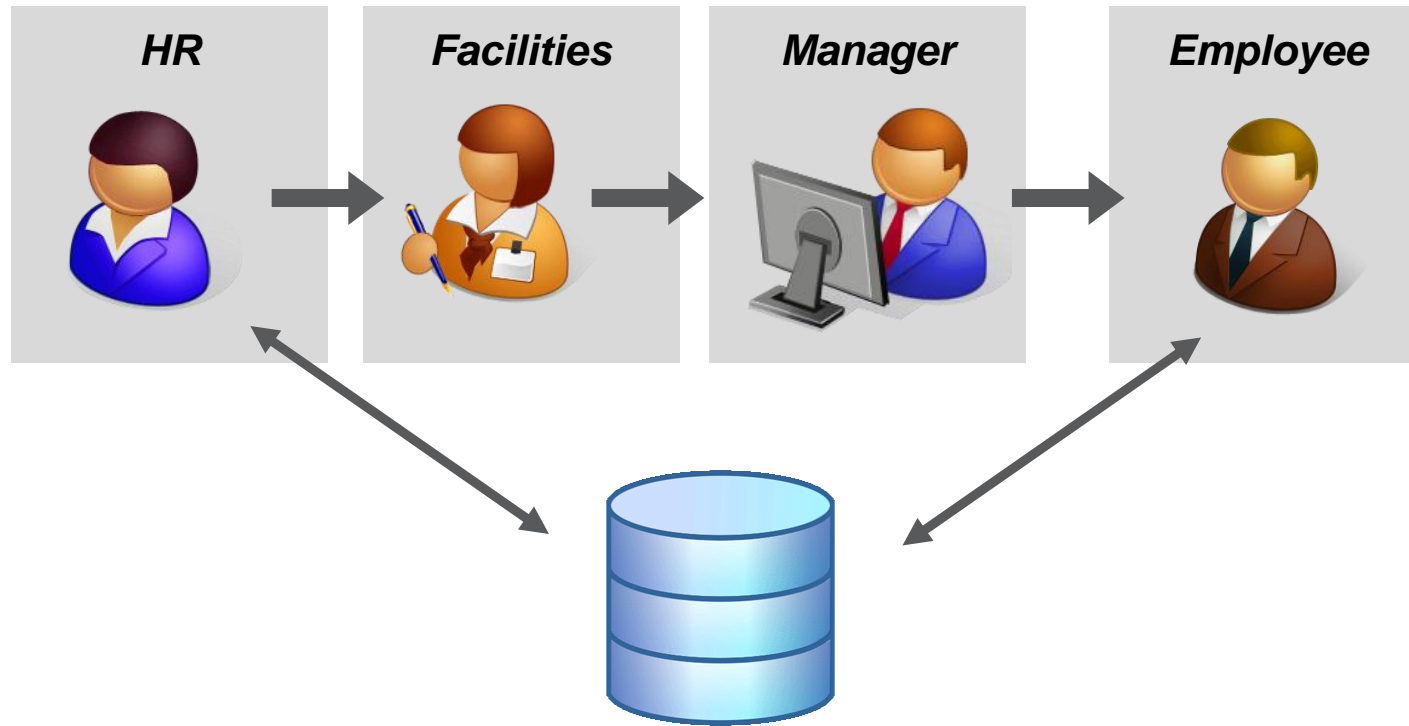
Traditional Environment Without Business Process Management

Before



Integrated Communication and Visibility with Business Process Management

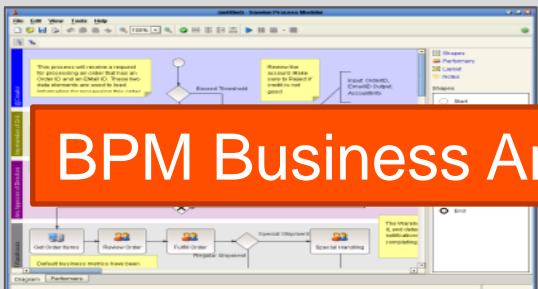
After



Status !

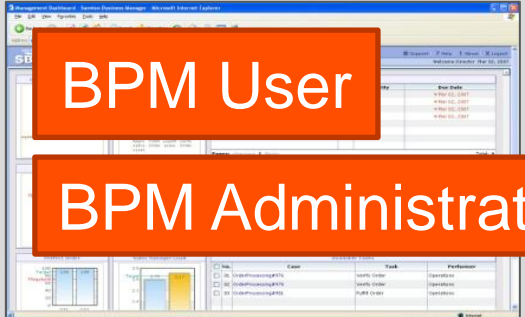
Who Is using Which OpenEdge BPM Component

Process Modeler



BPM Business Analyst

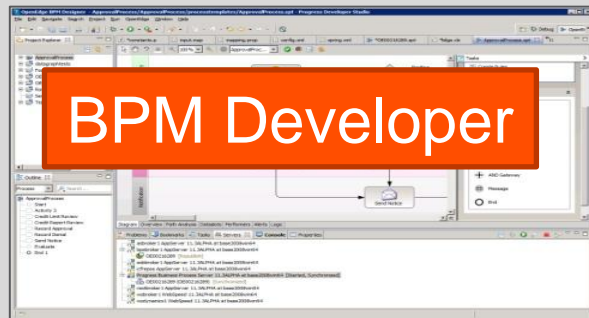
BP Portal



BPM User

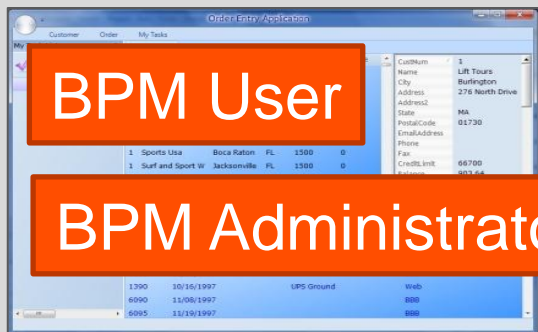
BPM Administrator

Progress Developer Studio for OpenEdge



BPM Developer

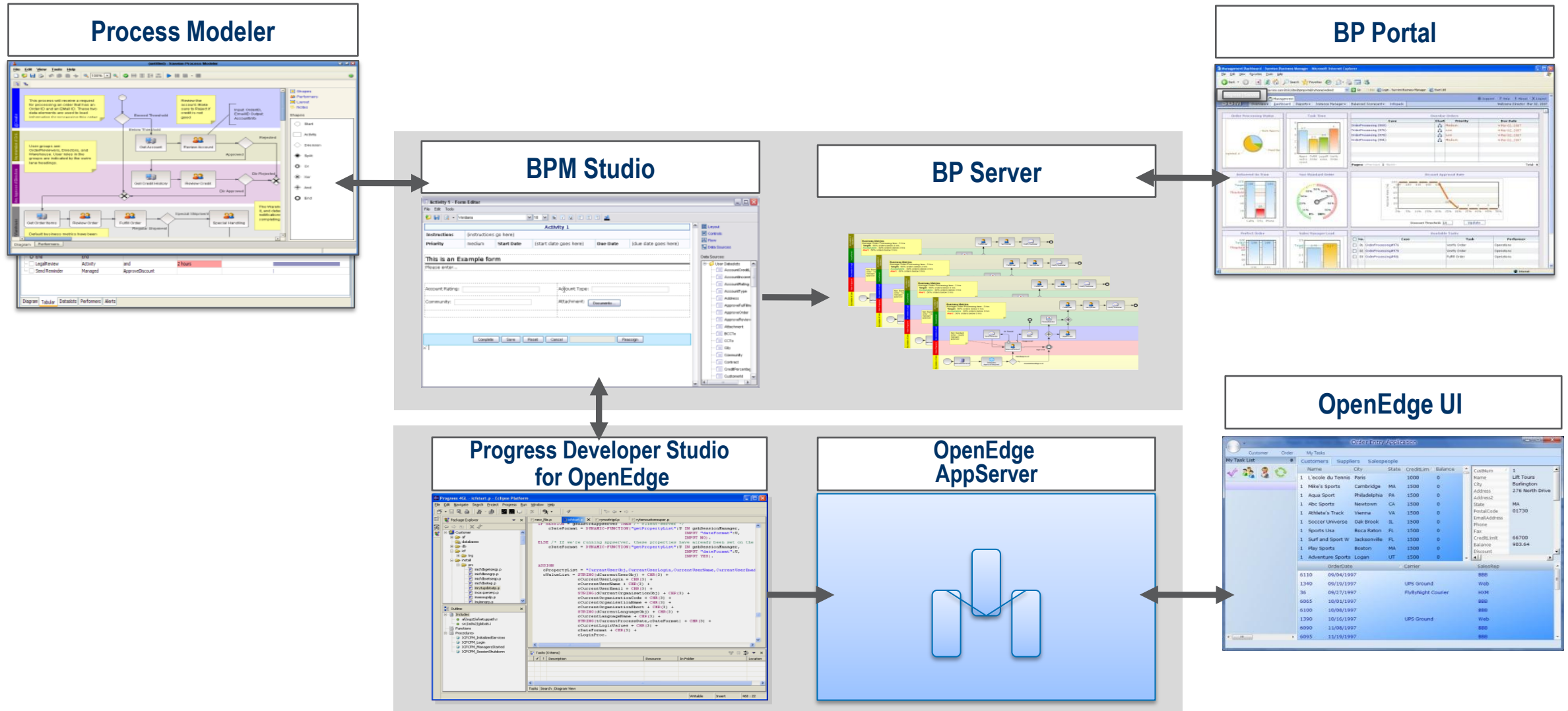
OpenEdge UI



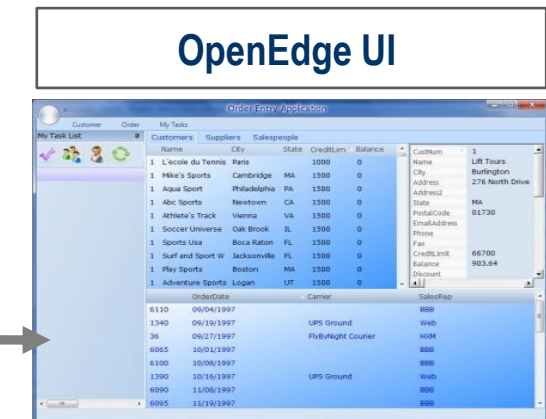
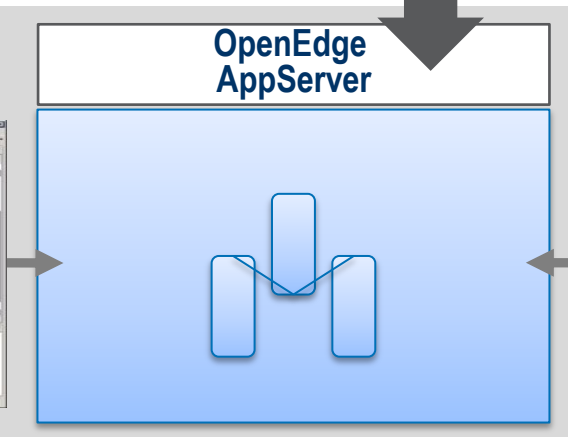
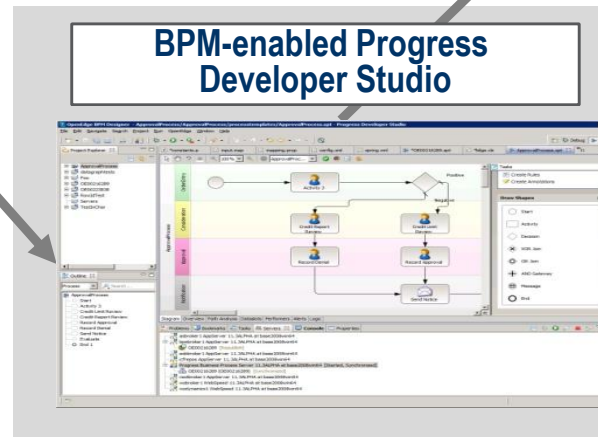
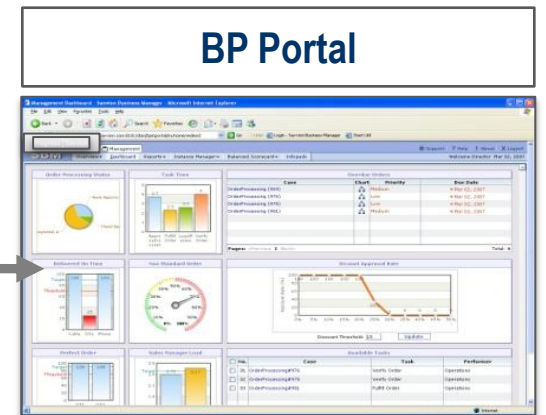
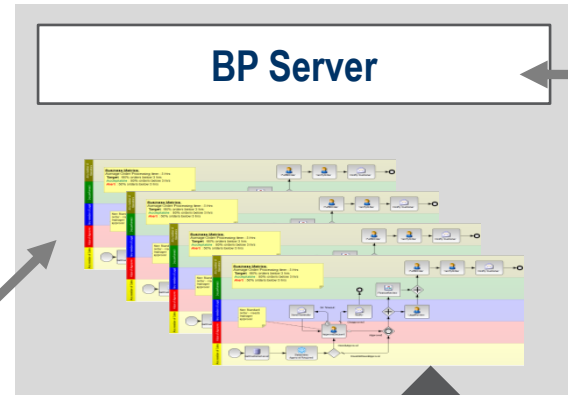
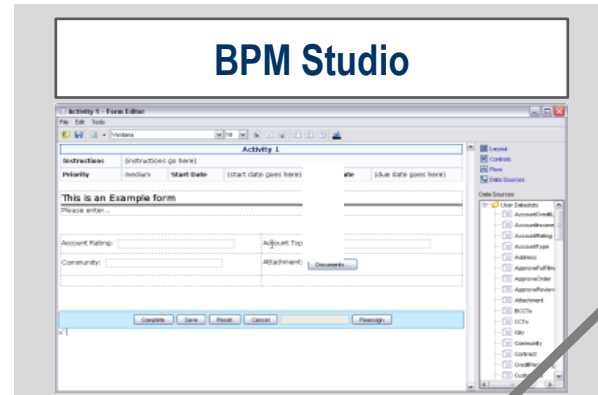
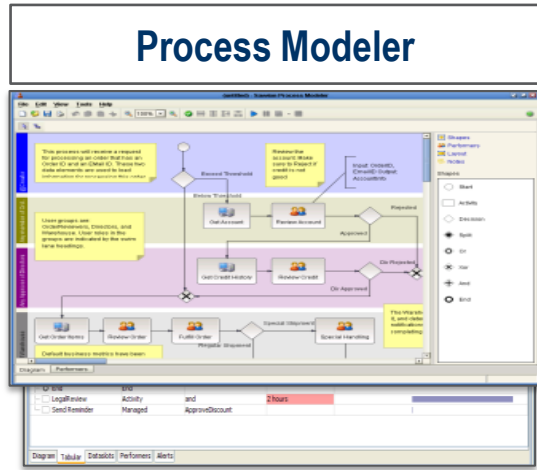
BPM User

BPM Administrator

Components of OpenEdge BPM Prior to OpenEdge 11.3



Components of OpenEdge 11.3 BPM



OpenEdge BPM 11.3 (compared to OpenEdge 11.1 and Savvion 8.0)

Business Process Management

- Now available as an integrated capability of the OpenEdge 11.3 platform
- Progress Developer Studio for OpenEdge includes BPM Studio plug-ins and a development version of Business Process Server
- JBoss community AppServer installed and pre-configured with an OpenEdge Database for use as a repository for the BP Server

OpenEdge BPM fully supports

- Monitoring processes from ABL, stateful processes, human interaction
- provides access to several managed adapters for rapid development and deployment of process-oriented applications

OpenEdge BPM 11.3 offers new features

- Streamlined Product installation
- DataSet and Table Support / ABL native data type support
- Additional presentation types
- Graphically creating conditions
- Integrated Security and Monitoring Processes

Lesson A – Design Your Process



Your Workshop Environment

At your disposal

- Assistance by Progress Experts attending
- Your own laptop with network access
- Your distinct virtual workshop machine with name and credentials
- The workshop book leading you task by task
- Completed Lessons in distinct workspaces

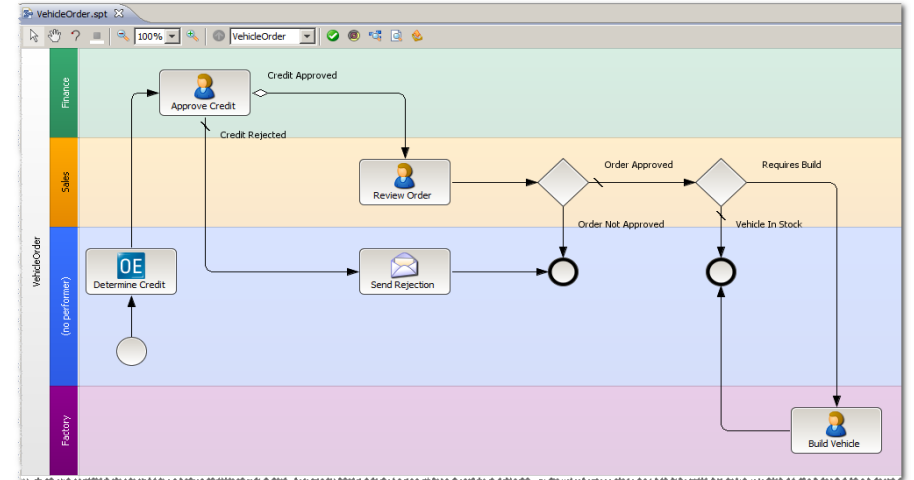
Lesson A – Design Your Process

You will

- Check out Progress Developer Studio for OpenEdge
- Create and configure the process

Your tasks

- Connect to your machine, see details at your desc and the screen
- Familiarize yourself with Progress Developer Studio for OpenEdge BPM
- Design the Vehicle Order Process



90 Minutes

Summary Lesson A

- You familiarized yourself with PDS
- You added worksteps and interfaces to the process
- You added process control
- You are ready for turning the process into an executable process

Lesson B – Deploy, Run, and Manage your Process



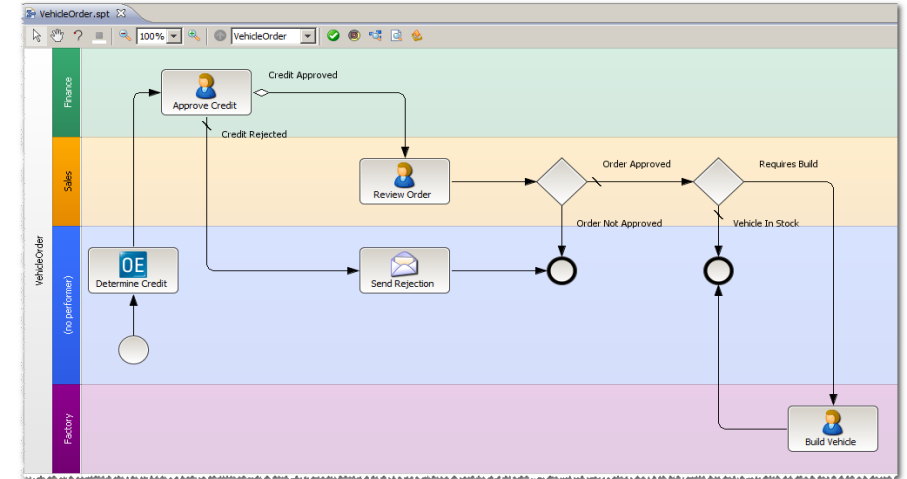
Lesson B – Deploy, Run and Manage your Process

You will

- Enrich your process with executable worksteps like decisions and adapters
- Integrate and Access OpenEdge ABL logic
- Deploy and run the Process

Your tasks

- Add OpenEdge Services to the process
- Deploy the process and run the process
- Check out the Management Portal



45 Minutes

Summary Lesson B

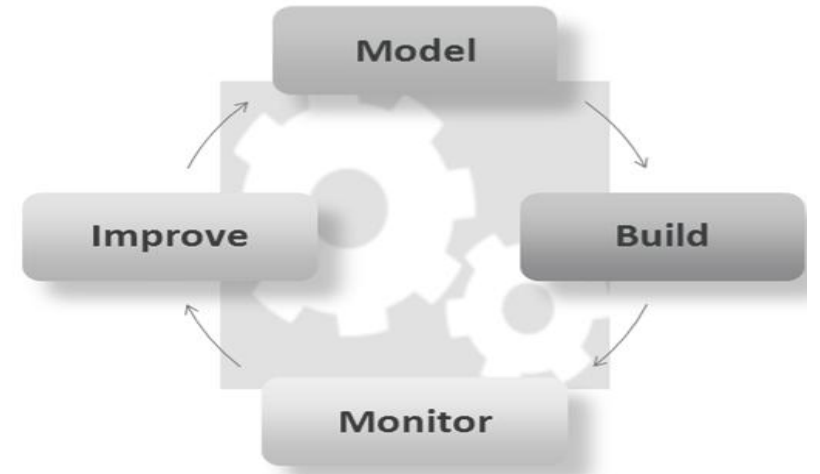
- You enriched the process to a complex executable process
- You deployed the process and created instances
- You used the Management Portal to get visibility

Wrap Up and Feedback



Business Process Management

- Process Analysis and Documentation
- Workflow Automation
- Process Status and History Visibility
- Model-driven development
- Application Integration





PROGRESS